

Bioceramics

BIO-C[®] TEMP

BIO-C[®] SEALER

BIO-C[®] REPAIR



Higher performance in **fewer sessions!**



New product!

BIO-C® TEMP

Bioceramic paste for
intracanal medication

INDICATIONS

- Intracanal medication in endodontic treatment of teeth with pulp necrosis and retreatments;
- Intracanal medication in cases of perforations, external and internal resorptions, prior to the use of **BIO-C® REPAIR**, **MTA REPAIR HP** and **MTA ANGELUS®**;
- Intracanal medication for cases of incomplete rhizogenesis.

Merely illustrative images.



Main Characteristics and Benefits

GRADUAL RELEASE OF CA²⁺

No periodic replacements needed

BIOCOMPATIBLE

Absence of symptomatology

HIGH ALKALINITY

Improper environment for bacterial growth

EASY TO REMOVE

Clinical time optimization

HIGH RADIOCAPACITY

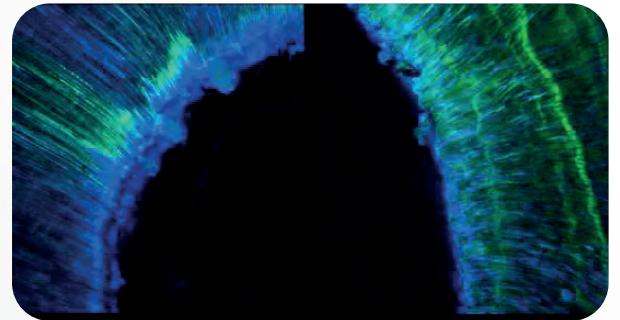
Great radiographic visualization

Technical Data

pH	~12
Radiopacity	≥ 9 mm Al
Particle Size	≤ 2 µm
Film thickness	~ 20 µm
Flow	~ 25 mm
Solubility	~ 1,0% (ISO6876 Adapted)

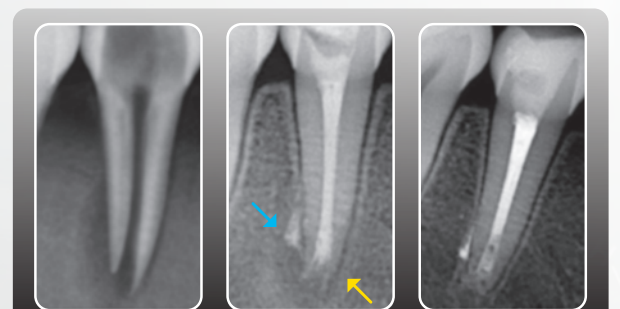
Particles size

The use of **BIO-C® TEMP** with **BIO-C® SEALER** provides greater penetration of the medication and sealer into the dentinal tubules, forming long tags.



Images in confocal laser scanning microscopy with fluorescence after the use of intracanal medication based on bioceramic compounds (**BIO-C® TEMP**) and obturation with bioceramic cement (**BIO-C® SEALER**). In fluorescent green it is possible to observe the presence of intracanal medication residue inside the dentinal tubules. In fluorescent blue, the penetration of sealing cement into the dentinal tubules is observed, with the formation of longer and more uniform tags.

Clinical Case



Initial RX

2 months of P.O.

6 months of P.O.

Image provided by Maria Antonieta Veloso Carvalho de Oliveira, DDS.

More than biocompatible!



BIO-C® SEALER

Ready to use bioceramic root canal sealer

Merely illustrative images.



INDICATIONS

- Root canal filling of permanent teeth;
- Internal resorption treatment.

Main Characteristics and Benefits

READY TO USE

No mixing required, application directly in the canal

RESIN-FREE

Easy to clean

HIGH RELEASE OF CALCIUM IONS

Stimulates tissue regeneration

HIGH ALKALINITY (pH~12)

Bactericidal action

EXCELLENT FLOWABILITY

Allows filling of accessory canals

SETTING EXPANSION

Prevents bacterial infiltration

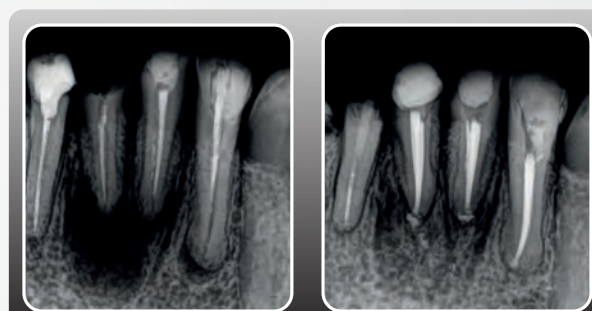
CHEMICAL ADHESION TO DENTIN

Better sealing

HIGH RADIOCAPACITY

Excellent radiographic visualization

Clinical Case



Initial RX

12 months of P.O.

Image provided by Image provided by Euclides Valadão, DDS, MSc.

Technical Data

Setting Time	≤ 240 minutes
Radiopacity	≥ 7,0 mm Al
pH	~12
Flow	23,46 mm
Particle Size	< 2 µm
Film Thickness	21 µm
Solubility	2,86%
Compressive Strength	9,724 ± 2,484 MPa

More than biocompatible!

BIO-C® REPAIR

Ready to use bioceramic reparative material (putty)

Merely illustrative images.



Micronized particles (< 2 µm)

Higher reactivity, accelerating the healing process and greater penetration into the dentinal tubules.

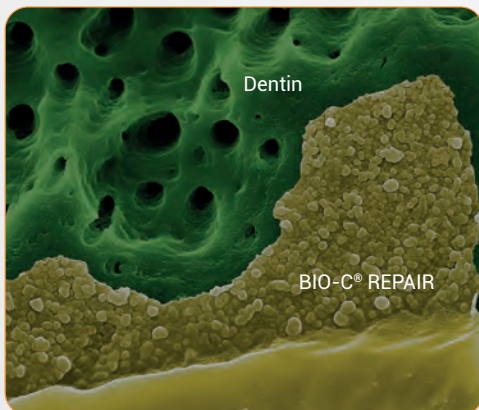


Image provided by Celso Klein, DDS: Scanning microscopy. Image with computerized coloration for didactic purposes.

The BIO-C® REPAIR comes packaged in a syringe with a threadable piston. It allows removal of the product from the syringe in small portions with no effort or waste.



INDICATIONS

- Treatment of perforation of root or furcation by canal;
- Treatment of perforation of root or furcation surgically;
- Treatment of internal resorption via canal;
- Treatment of external or communicating internal resorption surgically;
- Retrofilling in paraendodontic surgery;
- Direct and indirect pulp capping;
- Apexification;
- Apexogenesis;
- Pulpotomy;
- Pulp regeneration.

Technical Data

Setting time*	≤ 120 minutes
Radiopacity*	≥ 7,0 mm Al
pH	≈ 12
Particles Size	< 2 µm
Solubility*	Inferior to 3%
Setting Expansion	0,092 ± 0,05%
Compressive Strength	7,933 ± 3,284 MPa

*ISO 6876:2012.

Clinical Case



Image provided by Vicente Rocha, DDS.

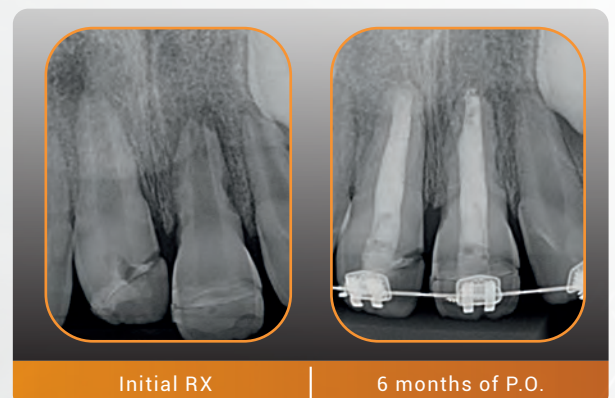
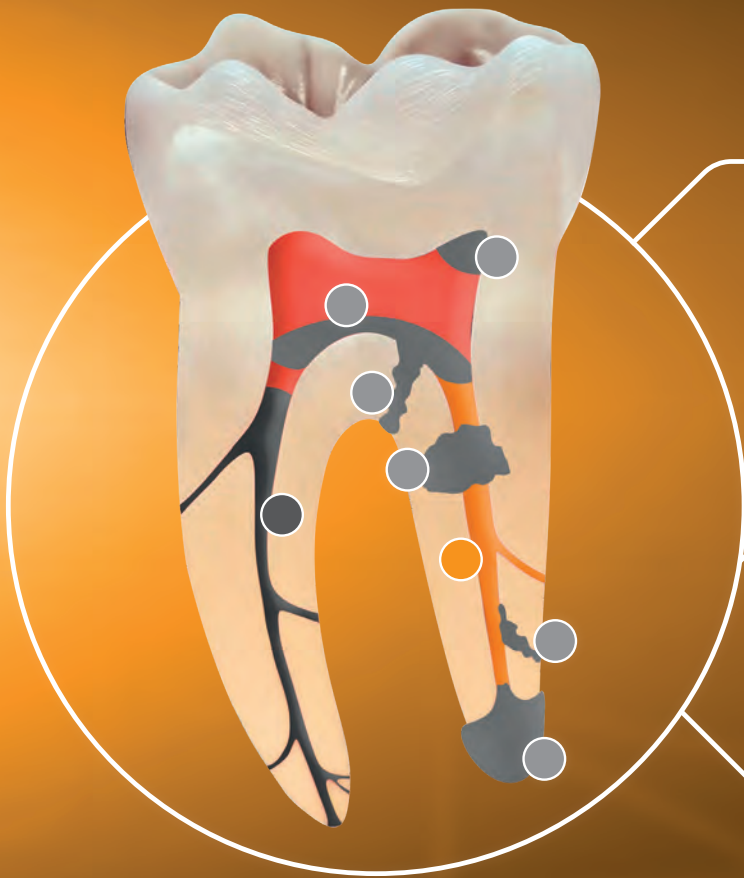


Image provided by Maria Cristina Carvalho, DDS.



Ready to use.



REPARATIVE



BIO-C® REPAIR



MEDICATION



BIO-C® TEMP



SEALER




BIO-C® SEALER



Simplified!

Customer Service
☎ 43 9 9919 0244
+55 43 2101 3200

 /angelusodonto
/angelusodontoglobal

 /AngelusOdonto

www.angelus.ind.br

 **angelus**[®]

 **angelus**[®]
Japan

 **angelus**[®]
USA


PRIMA DENTAL
by  **angelus**[®]